

Produktdatenblatt

Spezifikationen

StruxureWare Data Center Expert Standard



AP9470

Übersicht

Ausführung StruxureWare Data Center Expert Standard ist auf bis zu 2025 Geräte und 125 Überwachungskameras skalierbar.

Hauptmerkmale

Anzahl der Rack-Einheiten 1U

Anzahl der Kabel 2

Kommunikationsprotokoll DNS
HTTP
HTTPS
SMTP
SMS
SSL
TCP/IP

Delivered Zubehör Lizenzschlüssel für 1-Knotenüberwachung
25-Knoten-Lizenzschlüssel
CD mit Software
Server-Anwendung
Benutzerhandbuch
Installationsanleitung

Allgemein

Betriebssystem Windows 7
Windows 8
Windows Vista
Windows XP
Windows XP Professional SP1
Windows XP Professional SP2

Speicherkapazität 2 GB/250 GB verfügbarer Datenspeicher

Abmessungen

Farbe Schwarz

Höhe 4,4 cm

Breite 48,3 cm

Tiefe 48,3 cm

Produktgewicht 9,55 kg

Montageort Frontseite

Montagepräferenz No preference

Montagemodus Aufbau

Konformität

Produktzertifizierungen TAA-Konformität

Bruttopreisliste für Deutschland zuzüglich Zuschläge, Frachtkosten und Mehrwertsteuer, gültig ab dem 1. Januar 2024. Irrtum und Änderungen vorbehalten. Es gelten die AGBs der Schneider Electric GmbH.

Umgebung

Umgebungstemperatur bei Betrieb	10...35 °C
Betriebshöhe	0 - 10.000 ft
Relative Luftfeuchtigkeit	5...90 %
Umgebungstemperatur bei Lagerung	-35...60 °C
Aufbewahrungshöhe	0...9144 m
Relative Feuchtigkeit bei Lagerung	5...95 %

Kommunikation & Management

Kommunikationsnetztyp	RJ45, 10/100/1000 Base-T
-----------------------	--------------------------

Verpackungseinheiten

VPE 1 Art	PCE
Anzahl der Geräte pro Packung	1
VPE 1 Höhe	30,5 cm
VPE 1 Breite	88,9 cm
VPE 1 Länge	62,9 cm
Verpackungsgewicht (Lbs)	19,09 kg

Vertragliche Gewährleistung

Garantie (in Monaten)	24
-----------------------	----



Environmental Data

Schneider Electric hat sich zum Ziel gesetzt, den Net Zero-Status bis 2050 durch Lieferkettenpartnerschaften, Materialien mit geringerer Auswirkung und Kreislaufbildung über unsere laufende Kampagne "Use Better, Use Longer, Use Again" zu erreichen, um die Lebensdauer und Recyclingfähigkeit der Produkte zu verlängern.

[Erläuterung der Environmental Data >](#)

[Wie wir die Produktnachhaltigkeit bewerten >](#)

Umweltbilanz

Total lifecycle Carbon footprint	4 794 kg CO2 eq.
CO ₂ -Fußabdruck der Herstellungsphase [A1 bis A3]	330 kg CO2 eq.
CO ₂ -Fußabdruck der Distributionsphase [A4]	2 kg CO2 eq.
CO ₂ -Fußabdruck der Installationsphase [A5]	0 kg CO2 eq.
CO ₂ -Fußabdruck der Nutzungsphase [B2, B3, B4, B6]	9 540 kg CO2 eq.
CO ₂ -Fußabdruck der End-of-Life-Phase [C1 bis C4]	2 kg CO2 eq.
Umweltproduktdeklaration	Produktumweltprofil

Use Better

Materialien und Verpackung

Verpackung mit Recycling-Karton	Nein
Verpackung ohne Kunststoff	Nein
EU-RoHS-Richtlinie	Freistellungskonform
REACH-Verordnung	Produkt beinhaltet besorgniserregende Stoffe (SVHC) über dem Schwellwert

Use Longer

Verlängerung der Lebensdauer

Reparatur	Nein
-----------	------

Use Again

Reproduktion

Recyclingfähigkeitspotential in %	95
Circular Economy-Eignung	Entsorgungsinformationen
Rücknahme	Nein

Offer Marketing Illustration

Product benefits / Features

EcoStruxure IT Data Center Expert

Benefits



Complete Infrastructure Visibility

Deploy faster with automatic updates and centralized monitoring, reducing manual work and operational overhead.



Prevent Costly Downtime

Get proactive alerts and correlated insights to resolve infrastructure issues before they impact operations.



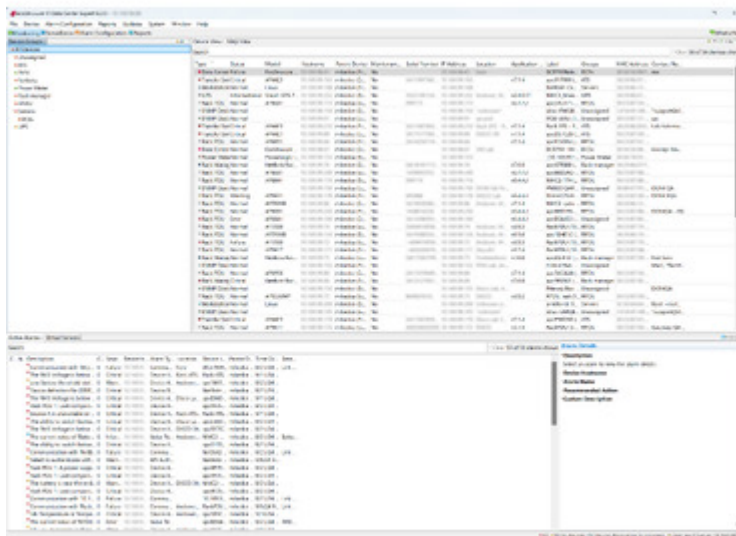
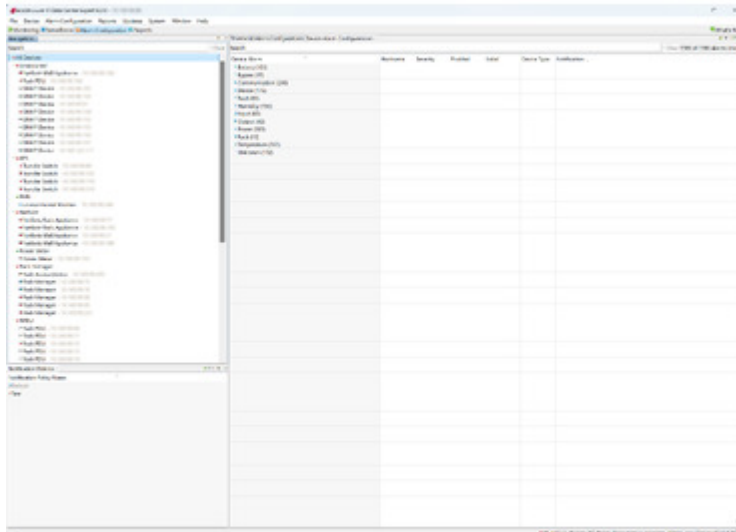
Scale Without Limits

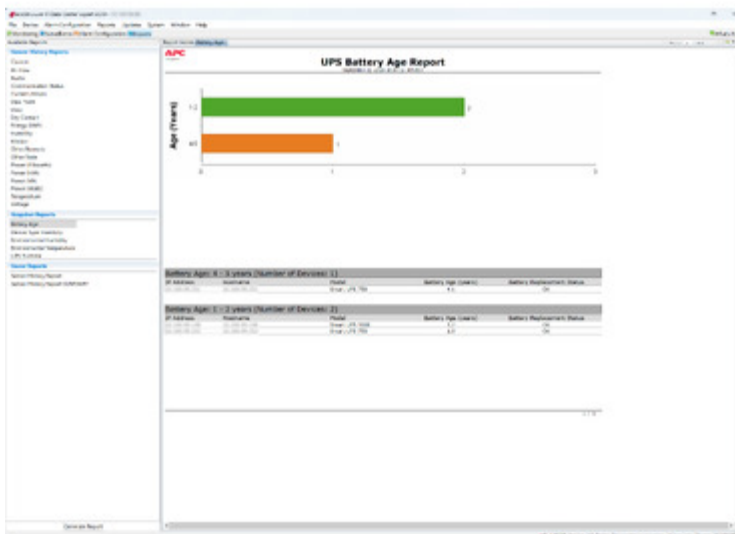
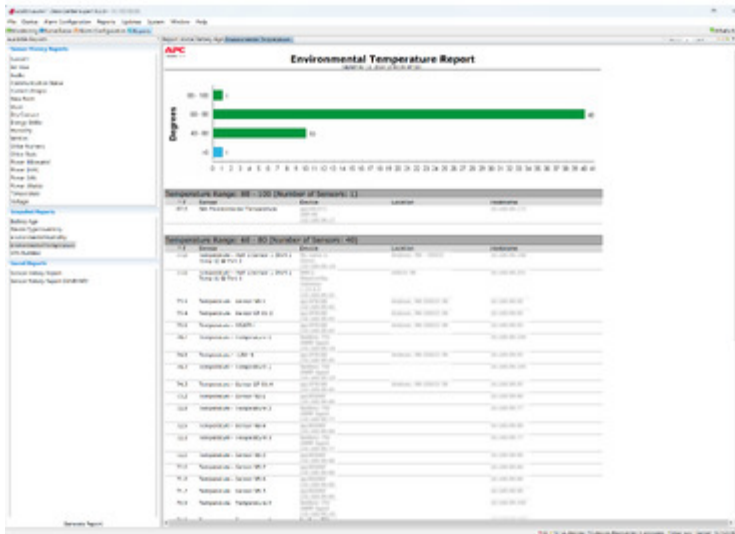
Adapt as your data center evolves without losing visibility, control, or compatibility across your infrastructure.

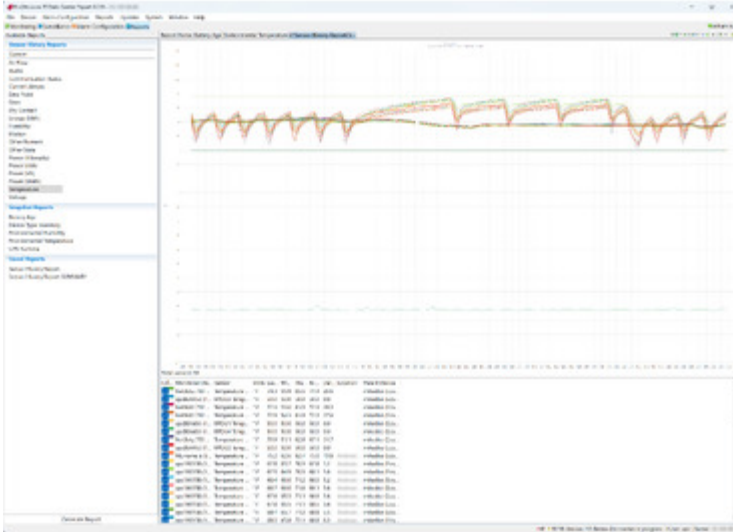


Image of product / Alternate images

Alternative







The screenshot shows a software interface with a table of device parameters and a configuration dialog box. The table lists various parameters and their values. The dialog box is titled 'Device Configuration' and contains several fields and buttons.

Device Name	Parameter	Severity	Enabled	Label	Notification Policy
Advanced Battery Management for Station 1	Advanced Battery Management for Station 1	Warning	Yes	Advanced Battery Management for Station 1	Default
Advanced Battery Management for Station 2	Advanced Battery Management for Station 2	Warning	Yes	Advanced Battery Management for Station 2	Default
Advanced Battery Management for Station 3	Advanced Battery Management for Station 3	Warning	Yes	Advanced Battery Management for Station 3	Default
Advanced Battery Management for Station 4	Advanced Battery Management for Station 4	Warning	Yes	Advanced Battery Management for Station 4	Default
Advanced Battery Management for Station 5	Advanced Battery Management for Station 5	Warning	Yes	Advanced Battery Management for Station 5	Default
Advanced Battery Management for Station 6	Advanced Battery Management for Station 6	Warning	Yes	Advanced Battery Management for Station 6	Default
Advanced Battery Management for Station 7	Advanced Battery Management for Station 7	Warning	Yes	Advanced Battery Management for Station 7	Default
Advanced Battery Management for Station 8	Advanced Battery Management for Station 8	Warning	Yes	Advanced Battery Management for Station 8	Default
Advanced Battery Management for Station 9	Advanced Battery Management for Station 9	Warning	Yes	Advanced Battery Management for Station 9	Default
Advanced Battery Management for Station 10	Advanced Battery Management for Station 10	Warning	Yes	Advanced Battery Management for Station 10	Default
Advanced Battery Management for Station 11	Advanced Battery Management for Station 11	Warning	Yes	Advanced Battery Management for Station 11	Default
Advanced Battery Management for Station 12	Advanced Battery Management for Station 12	Warning	Yes	Advanced Battery Management for Station 12	Default
Advanced Battery Management for Station 13	Advanced Battery Management for Station 13	Warning	Yes	Advanced Battery Management for Station 13	Default
Advanced Battery Management for Station 14	Advanced Battery Management for Station 14	Warning	Yes	Advanced Battery Management for Station 14	Default
Advanced Battery Management for Station 15	Advanced Battery Management for Station 15	Warning	Yes	Advanced Battery Management for Station 15	Default
Advanced Battery Management for Station 16	Advanced Battery Management for Station 16	Warning	Yes	Advanced Battery Management for Station 16	Default
Advanced Battery Management for Station 17	Advanced Battery Management for Station 17	Warning	Yes	Advanced Battery Management for Station 17	Default
Advanced Battery Management for Station 18	Advanced Battery Management for Station 18	Warning	Yes	Advanced Battery Management for Station 18	Default
Advanced Battery Management for Station 19	Advanced Battery Management for Station 19	Warning	Yes	Advanced Battery Management for Station 19	Default
Advanced Battery Management for Station 20	Advanced Battery Management for Station 20	Warning	Yes	Advanced Battery Management for Station 20	Default

